

UNIT SQUARE FOOTAGE:

Unit #60 Exclusive Use (EU) Area

First Floor Living	=	848 sf
Basement Laundry/Storage	=	155 sf
Total Area	=	1,003 sf

Unit #58 Exclusive Use (EU) Area

First Floor Access	=	30 sf
Second Floor Living	=	902 sf
Third Floor (finished attic)	=	572 sf
Total Living Area	=	1,504 sf
Basement Storage	=	198 sf
Back Entry Mud Room (First Floor)	=	44 sf
Second Floor Front Deck	=	52 sf
Total Area	=	1,798 sf

Common Use (CU) Area:

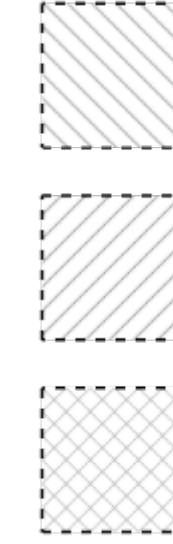
Entry: Front Porch	=	53 sf
Basement Access (First Floor)	=	40 sf
Basement: Mechanical and Utilities	=	474 sf

LEGEND:

UNIT #60 AREA

UNIT #58 AREA

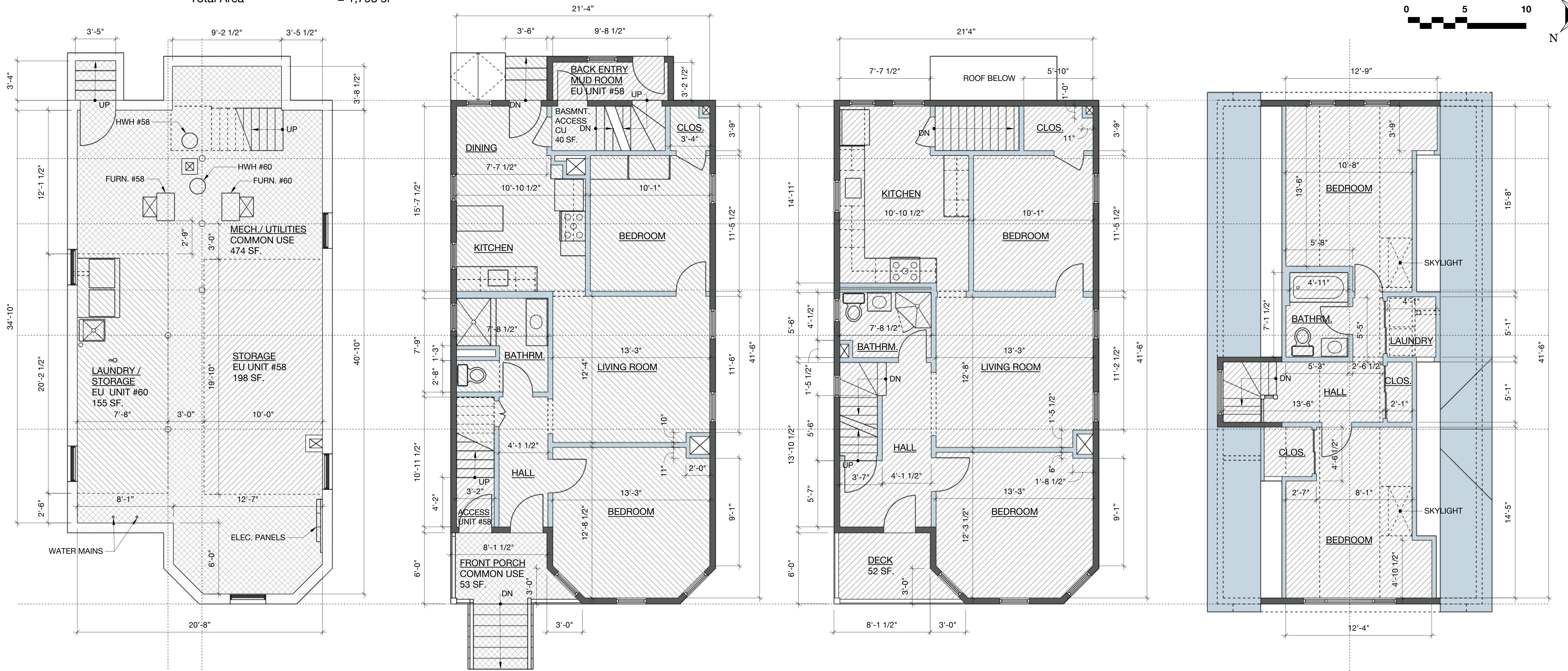
COMMON AREA



NOTE:

Please refer to Site Plan prepared by Merrimack Engineering Services, Inc. dated February 6, 2026 for the property lines and all the "Limited Use", "Exclusive Use", "Common Areas" and facilities outside of the building.

FOR REGISTRY USE ONLY



1 Basement Floor Plan
A01 Scale: 1/4"=1'-0"

2 First Floor Plan - Unit #60
A01 Scale: 1/4"=1'-0"

3 Second Floor Plan - Unit #58
A01 Scale: 1/4"=1'-0"

4 Third Floor Plan - Unit #58
A01 Scale: 1/4"=1'-0"

DRAFT

Condominium Floor Plans

58-60 Elmwood Street, Somerville, MA 02144

MICHAEL FAZIO
Architect
51 Foskett Street #1
Somerville, MA 02144
(617) 899-7117

STAMP:

CERTIFICATION:
I CERTIFY THAT THESE PLANS FULLY AND ACCURATELY DEPICT THE LAYOUT, LOCATION, UNIT NUMBER AND DIMENSIONS OF **58-60 ELMWOOD ST., SOMERVILLE, MA**, AS BUILT. THIS PLAN HAS BEEN PREPARED IN CONFORMITY WITH THE RULES AND REGULATIONS OF THE MIDDLESEX COUNTY SOUTH REGISTRY OF DEEDS.

MICHAEL F. FAZIO, AIA, NCARB, ARCHITECT MA REG. NO. 50966

REVISIONS

NO.	MM/DD/YYYY	REMARKS
1	___/___/___	...
2	___/___/___	...
3	___/___/___	...
4	___/___/___	...
5	___/___/___	...

DATE: APRIL 9, 2026

A 01